

MARINE TORQUE TALK

What's happening on the water from ...

VOLVO PENTA

MATUKU

This striking 18m boat from the pen of Auckland based designer Dennis Harjamaa of Artnautica Yacht Design was launched in 2022.

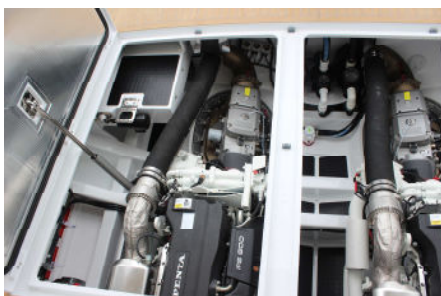
The client's design brief was quite challenging as this boat had to fulfill three competing design objectives. First, be spacious and comfortable for family vacationing. Second, a stable and efficient, high-speed planing monohull; set up for offshore game fishing. Third, an efficient, long-distance passage-making, with a safe travel distance of more than 1200 nautical miles (2,200 km) – the distance from New Zealand to Fiji, without the need to carry reserve tanks.



To achieve this brief, it was decided to build the entire boat using carbon-fibre. Keeping weight to a minimum was the overriding build requirement. Built more like a racing sail yacht than a traditionally built sport fisher, every component was weighed before fitting, or after fabrication as two very efficient 625 hp Volvo Penta IPS 800 D11 engines had been specified. The power output from these engines is substantially below that which would be found on similar sized 18m sports fisher boats – yet still produces a top speed over 30 knots and a cruise at 26 knots whilst maintaining very good fuel efficiency. 'Lightweight Hull plus smaller engines', says Dennis Harjamaa, 'leads to a virtuous circle of less mass and less fuel consumption.'

However, keeping things light has not required sacrificing comfort with a super king bed in the owners cabin, heated floors in the owner and guest heads, a push button, retractable Furuno, 19 inch Multi-Function-Display in the cockpit, an actuator driven, pop-up docking joystick built into the cockpit side decks, dynamic positioning system and diesel fueled water heater are some of the bespoke and innovative features to be found aboard Matuku.

Matuku's owner was intimately involved in her design and construction, enjoying the flexibility a full custom build allows. When asked what the build experience has been like, project team leader Gareth Curd said 'It has been awesome to have our client involved every step of the way. This has totally played into our strengths as custom boat builders; it means we have been able to include many of the small design changes and personal touches our client wanted as we have gone along.' 'It has been a very interesting boat to build.' Project Manager Kerry Johnson added 'It's been great working with an owner who appreciates engineering effort and workmanship behind the scenes.'



SPECIFICATIONS:

LOA: 18m

Draft: 1.27m

Engines: 2 x Volvo Penta D11 IPS 800

Cruise Speed: 26 knots

Estimated Range: 1,400 + nautical miles at 10 knots

Beam: 5.6m

Dry Weight: 22,000kg

Fuel: 6,000 litres

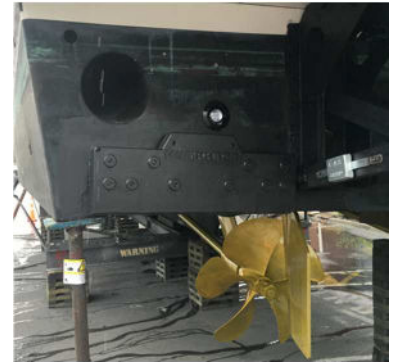
Max Speed: 30 knots

HUMPHREE TRIM & STABILIZATION PROJECTS



Maritimo 70 fitted with Humphree HE750 with comfort software package (auto trim & list)

This Maritimo 70 was fitted with HE750 Humphree interceptors by Braden Webber Marine in Gulf Harbour replacing the Bennett's system that was installed at the Maritimo factory when the vessel was under construction. At the time of the sea trial setup, we had a fuel saving of 30 litres per side, per hour, at 22 knots with the extra comfort of stabilization that Humphree is known for.



Corinthian fitted with X600 with comfort software package (auto trim & list)

This vessel owner is an ex-boat builder who fitted the new Humphree system and did a fantastic job, along with other work at the same time. On sea trial at 20 knots we were able to increase his driving view by decreasing this boat trim angle by 52%. The angle with the Humphree system turned off was 7 degrees. Humphree system turned on with auto trim reduced it to 3.7 degrees. With the added benefit of auto list, this provided all round comfort and an enjoyable experience compared to the previous system that was fitted.

Oliver 4000 Fitted with Humphree X600 with comfort software package (auto trim & list)

The customer of the Oliver vessel was getting frustrated with the last two products that were fitted and just wasn't happy with the performance that he was getting from them. Third time lucky a set of Humphree X600 series was fitted. Once auto trim and list was set up the ride of the vessel was instant. A better view from the driver position and with auto list activated this took the vessel to another level.



Maritimo 72 fitted with Humphree H1200 with Dynamic Plus software package (auto trim & list, Coordinated Turn, Pitch & Roll Stabilization)

This Maritimo 72 was having issues with lift from the tabs that were fitted from the factory and was also having issues with them breaking due to the forces they were under. After an assessment of the vessel, a set of H1200 was fitted to give the vessel every chance of a good lift from a slow speed to getting on the plane. Along with this, the vessel was optioned with the highest software package that is available from Humphree. "Dynamic Plus". Once all 4 options were set up we had less trim of 1.0 to 1.5 degrees from 16 to 24 knots. More control under turns with coordinated turns with the assistance of auto list and the added benefit of Pitch & Roll Stabilization. At 16 knots we had 11 litres of fuel saving per side, per hour. Overall the customer was very happy and incredulous at how fast the interceptors worked with the Stabilization option activated.



LIGHTNING™

BY HUMPHREE

TAKES YOUR
BOATING TO THE
NEXT LEVEL

Setting a new standard in
trim & stabilization. Again.
Priced for 20-45ft boats.

LIGHTNING by Humphree™ is an automatic trim & stabilization system that brings world class comfort, increased speed and fuel savings. LIGHTNING is suitable for 20-45ft boats.

Its combination of our advanced technology, user-friendly interface, mobile app integration, and beautiful underwater LED lighting system is what truly sets it apart.

No matter which propulsion system you use; outboards, electric, sterndrive, inboard—this new system will be the perfect choice for new build boats or for when you refit a used boat. It will take you to the next level.



AUTOMATIC FUNCTIONS

Auto Trim • Pitch Control • Auto List • Coordinated Turn • Roll Stabilization



HUMPHREE®

Trim and stabilization systems

Humphree Distributor New Zealand & Pacific Islands:
Volpower NZ Limited. Ph: 0800 865 769 or 09 274 4305



www.volpower.co.nz

VOLPOWER NZ TOPS OCEANIA

Volpower NZ Ltd has received the Business Partner of the year award from Volvo Penta Oceania.

The award for the 2022 year was presented at a recent Business Partner meeting held in Brisbane.

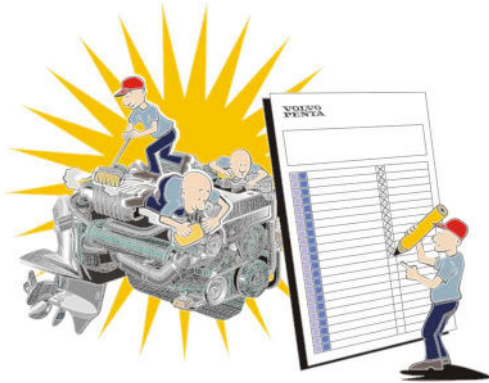
The criteria encompasses many different areas of the overall business of being a successful importer/distributor, including sales, parts supply, and a successful dealer network among other things.

Here Wayne Patten, Managing Director for Volpower NZ Ltd can be seen accepting the award from Martin Skoglund (head of VPO on the right) and Gavin Rooney (Director of Sales and Marketing on the left).



“My appreciation goes out to the team we have within Volpower NZ and our strong dealer network that supports the product”. Wayne Patten.

SERVICE TIPS



1) The majority of Volvo Penta engines are now electronically controlled and use Volvo’s EVC system. It is very important that the installation has its own dedicated start battery that is sized correctly to ensure good clean voltage for the engine and EVC system. Avoid running high demand accessories from this battery. Use a separate battery bank for house loads and ensure the engine battery is connected as the primary load. For installations with high house demands, it’s better to fit an additional accessory alternator, especially if lithium batteries are installed.

2) Clean diesel has always been a requirement for reliable engine operation and is just as important as ever. Don’t overlook regular checks and servicing of the diesel filtration system. When repowering a vessel, its often a good time to have the tanks inspected, cleaned out and replace all the old fuel lines as well. It’s also a good idea to keep metal fuel tanks topped up to prevent condensation forming on the inside on a cold night. The water produced in a half empty tank can be significant and can overwhelm the filtration system if left unchecked.

3) The importance of reaching the rated RPM. Every marine engine has a rated RPM and an allowable working range when fine tuning propellers and it’s important that these figures are reached to avoid engine overload or a derating situation. Ideally this should be checked when the vessel is full of water and fuel. As a vessel ages and gets heavier and the bottom gets dirtier the max RPM will drop so aim for the upper RPM range if possible to allow for some drop off in performance. Remember an overloaded diesel engine will burn more fuel, produce more pollutants and ultimately shorten its life span so it is worth getting right.

RACOR FUEL FILTERS

Parker Racor Fuel Filter



Together, we can
protect your
investment in engines
and fuel, maximize
fuel economy,
performance and
maintain a clean
environment.

Parker Racor fuel filters are built with patented Aquabloc elements to obtain maximum efficiency, high dirt holding capacity and are used by many engine manufacturers worldwide for their reliability.

Racor Turbine Series is the most complete, most efficient, most reliable high-capacity engine protection you can install.



0800 VOLPOWER

KEESTRACK R3 IMPACT CRUSHER POWERED BY VOLVO PENTA INDUSTRIAL TAD843VE



Kee-track Impact Crusher powered by Volvo Penta TAD843VE, with up to 250 Tonnes capacity per hour.

When a customer recently found they had trouble with their Kee-track R3 Impact Crusher powered by Volvo Penta, they called Blueprint Diesel to investigate the reason for the failure. James, from Blueprint Diesel found the engine failing was caused by dust ingress entering the air intake.

The engine was replaced with a TAD843VE Industrial engine and the customer is now operational.

They are pleased with the installation and performance.

Customer demand is increasing for rock crushing due to more roads needing repair as well as forestry roads.

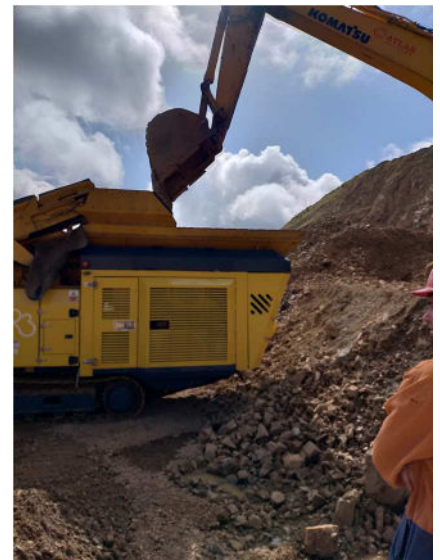
The increasing demand for equipment fitted with Volvo Penta powered engines has increased in New Zealand over recent years.

The customers have only good comments and reports about the engines. We are told they like the fact it's a well-supported product. The issues faced are minimal and the fuel economy is a huge advantage.

Reliability is key for these operations.

With the most demanding applications, our client requests Volvo Penta to support them in the harshest conditions.

Blueprint Diesel hope to continue building good positive client relationships moving forward with end users operating equipment powered by Volvo Penta.



62G Greenmount Drive
East Tamaki, Auckland 2141

Ph: 0800 433 889
E: sales@blueprintdiesel.co.nz

www.blueprintdiesel.co.nz

VOLPOWER STAFF CHANGES

Colleen Williams

Colleen joined Volpower back in August 2022 as our Warehouse Supervisor. For the last 13 years she worked as a courier driver for Lab Test .

She decided to change her career so that she could spend more quality time with her young son and has not regretted that decision. Since Colleen joined Volpower she has improved the distribution of parts to our dealers and is doing a great job with other aspects of the role.



Michael Moore

Michael ("Mike") joined Volpower in August 2022 as Technical Assist. He has come from a Retail Dealer where he worked as a marine technician for 4 years.

Mike has fitted in well and is getting to know our dealer network and the Volvo Penta way. Mike is supporting Adrian Penman who is our National Trainer and Head of Technical Support for our Volvo Penta Network.



ASK ABOUT VOLVO PENTA "EXTEND YOUR CARE" PACKAGES



EXTEND YOUR CARE.

Increase the protection of your whole Volvo Penta package – from helm to prop. Choose our new Extended Coverage to keep it fully protected for another three years, after the first two years of our standard warranty has expired.

With a fuel-efficient, high-quality Volvo Penta engine in your boat, you have started in the best possible way. By extending the protection of your propulsion package, you will stay safe and in control.



That's Easy Boating.

**VOLVO
PENTA**
www.volvopenta.com

SOUND PROOFING

Pyrotek
noise control

Volpower distribute affordable Pyrotek Noise Control products through our dealer network to provide sound proofing solutions for marine and industrial applications.

To see samples contact your local Volvo Penta Dealer now, or go to www.volpower.co.nz



2 + 3 YEAR WARRANTY ON ALL NEW VOLVO PENTA MARINE ENGINES

*Conditional on annual service by authorized Volvo Penta dealers.

VOLVO PENTA MARINE DEALER LIST

NEW ZEALAND:

OPUA: JB Marine. Paihia Ph 09-402-8375

WHANGAREI: Whangarei Marine Services. Whangarei Ph 09-438-3296

Marsden Cove Marine. Marsden Cove Ph 09-432-8132

MATAKANA: Matakana Marine & Engineering Ltd. Matakana Ph 09-422-7822

WHANGAPARAOA: Marine Solutions Gulf Harbour.

Whangaparaoa Ph 09-424-1260

AUCKLAND:

Ovlov Marine Ltd. Westhaven Ph 09-377-4285

Ovlov Marine - Pine Harbour Limited. Beachlands Ph 09-536-5249

Allvo Marine & Engineering Ltd. Half Moon Bay Marina Ph 09-535-9189

Bensemman Boating. Westpark Marina Ph 09-416 2190

WHITIANGA: Pacific Coast Marine & Diesel. Whitianga Ph 07-866-0551

BAY OF PLENTY/WAIKATO: Coastline Marine Limited.

Tauranga Ph 07-574-9613

TAUPO: Quality Marine Services. Taupo Ph 07-378-7031

NAPIER: Euro City Automotive & Marine. Napier Ph 06 8358810

WANGANUI: Marine Services Wanganui Ltd. Wanganui Ph 06-345-6958

PORIRUA: KP Marine. Porirua Ph 04 233 6164

WELLINGTON: TS Marine Ltd. Wellington Ph 04-979-9895

PICTON: Seatech Marine Limited. Picton Ph 03-573-6477

Seafarer Marine (MARINE COMMERCIAL) Picton 03-573-8911

PORT NELSON: Aimex Ltd. Port Nelson Ph 03-548-1439

KAIKOURA: Kaikoura Marine Services Ltd. Kaikoura Ph 03-319-5276

CHRISTCHURCH Sports Marine Ph 03 379-9208

WANAKA The Boat Shed Wanaka (PARTS & SERVICE ONLY) 03 443 6260

DUNEDIN Heavy Diesel Support (MARINE & INDUSTRIAL) .0275 222086

FIJI:

NADI: Yacht Help Fiji. Nadi Ph 679-675-0911-2

WEBSITE INFO: Visit our website for new engines and trans, parts, accessories, servicing etc. www.volpower.co.nz

Published by Volpower N.Z. Limited, P.O. Box 58744, Botany, Auckland 2163. Phone: 09 274-4305 **0800 VOLPOWER**

Proud to be part of N.Z.'s most comprehensive marine dealer network.

**VOLVO
PENTA**