

Spring 2011

MARINE TORQUE TALK

What's happening on the water from ...

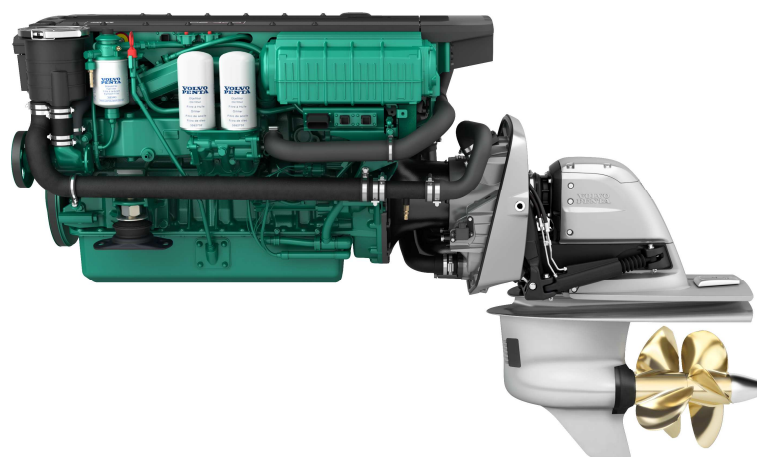
VOLVO PENTA

ALL NEW D6-400 HP STERN DRIVE

D6-400 DPH:

Volvo Penta launches world's most powerful diesel sterndrive

Volvo Penta invented the high-performance diesel sterndrive in 1977 and has been the undisputed market leader in this constantly expanding segment ever since. The latest addition confirms this position: a 400 hp version of the D6 engine, matched with a refined DPH Duoprop drive – the world's most powerful diesel sterndrive.



"The D6-400 has been developed to power larger vessels," says Björn Säljö at Volvo Penta product planning. "We have a demand from boat builders for diesel sterndrive to power sport cruisers in the 45-foot segment. The new D6-400 DPH will do this perfectly."

New and well-proven

The D6-400 engine is based on the proven design of the IPS600 engine. Compared to the current D6-370, the 400-version has supercharging with a larger turbo and a tuned mechanical compressor. The charge air cooler has increased capacity to handle the increased flow, and the cooling system has a new heat exchanger and improved oil cooling. The combustion chamber features modified design, a new valve position and increased capacity injectors. The efficient combustion leads to low overall emissions.

Volvo Penta torque

Getting a 12-tonne launch onto the plane requires torque. This is where the Volvo Penta compressor concept excels by producing charge air - and thereby a massive torque - directly from low rpms. The D6-370 is today unmatched and the new D6-400 is 10% better. Maximum torque of 970 Nm is reached as low as 2000 rpm - enough to produce safe and fast acceleration onto the plane for great driving enjoyment.

Matched drive

To handle the D6-400 while still maintaining a slim and efficient underwater body, Volvo Penta developed new technology. The upper unit comes with a new bearing box with a new roller bearing, a reinforced suspension fork and redesigned gear geometry. The lower unit features gears with geometry developed by Volvo Penta and made from unique super-high tensile steel with efficient lubrication. Lubrication has also been redesigned to ensure that the drive can handle the tremendous forces with high reliability.

Joystick and more

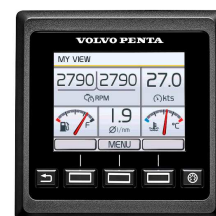
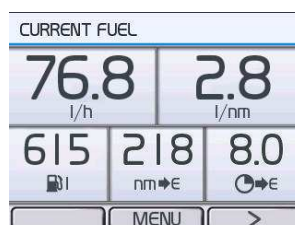
D6-400 DPH is available with a number of smart features to make boating easier:

- Twin installations can have the highly popular joystick docking. The driver can easily maneuver the boat in any direction, using just the joystick. No bow thrusters are needed.
- The Powertrim assistant automatically adjusts drive trim to give the best possible efficiency.
- Cruise control lets the driver fine-tune speed at the touch of a button.
- Single-lever mode operates both engines with just one lever.

Technical data:

Configuration:	In-line six-cylinder diesel with electronically controlled common rail injection, turbo, mechanical compressor and charge air cooler.
Displacement:	5.5 liters.
Crankshaft power:	400 hp/294 Kw
Drive:	DPH Duoprop @ 1.59:1 ratio

One of the many options with the new D6-400 is the all new 4" colour information display.



CAPTAIN MORGAN

Catering for the serious sports fishermen White Pointer Boats saw a demand for a vessel that was easy to tow and launch, as well as giving good sea keeping and overnight capability. The result was their new 730 Sports Hard Top. This boat was originally designed to be outboard powered, but with more and more demand for better fuel economy and range they decided to modify the design to take a diesel stern drive, selecting the Volvo Penta D3-200 with duo prop stern drive. The outcome was exceptional, giving a top speed of 34.5 knots and a very economical cruise speed of 20 to 25 knots, using 0.7 of a litre per nautical mile and giving over 400 nautical mile range.

Model:	730 Sports Hard Top
LOA:	7.4 metres
WLL:	6.8 metres
Beam:	2.45 metres

White Pointer Boats
189 Stanley Road
Gisborne
Ph 06-868 6519



SENATOR CAT

Wayne McKinley of Senator Boats in Napier knew exactly what he wanted when it came to designing and building his new boat. It needed to have the latest technology equipment, lots of space for fishing, entertaining and accommodation, plenty of power, good maneuverability as well as shallow water draught and protection from propeller damage. He has certainly achieved all of this with his new 17 metre catamaran which has a huge 5.6 metre beam, the latest technology Volvo Penta D13-800hp engines coupling the HJ364 Hamilton jets with blue arrow controls and mouse boat docking. This 18 tonne monster does a top speed of 43 knots and cruises comfortably at 36 knots, where it is using under 6 litres per nautical mile.



Model:	17 metre Catamaran
LOA:	17 metres
WLL:	14 metres
Beam:	5.6 metres

Senator Boats
21 Hamilton Place
Onekawa
Ph 06-8436882

NEW MEETS OLD

Ovlov Marine Pine Harbour have successfully taken on the challenge of adapting a new D1-13hp engine to an older version 120S sail drive in an Elliot 7.9m yacht.

The 120S was connected up to a MD7B which was a 17.5hp 2 cylinder engine that was manufactured in the early 1980s. The decision to use the lower horse power D1-13 was based on the better torque range, smaller dimensions and lighter weight of the engine and it was installed on the original engine bed with the aid of a 20mm spacer. The adaption to the sail drive was made possible by manufacturing an adaptor plate between the engine and sail drive, as well as using a modified drive coupling. The outcome was very favourable with more space in the engine bay, smoother running with no sign of the vibration (that used to run up the mast). Much better starting and reliability, as well as the weight reduction advantage, now allows the boat to sit where it should in relation to the water line.

For further information contact Phil at Ovlov Marine, Pine Harbour.



Ovlov Marine - Pine Harbour Limited
Unit 9 Pine Harbour Marina Complex
Jack Lachlan Drive
Beachlands
Ph 09-536-5249

VOLVO PENTA REGION OCEANIA DEALER CONFERENCE



This year Volpower Marine Dealers attended a joint Volvo Penta Region Oceania Dealer Conference which was held on 28th and 29th May at Seaworld Resort & Waterpark on the Gold Coast, Australia. At this Conference all Dealers and Penta Centre's from Australia, New Zealand and New Caledonia joined together at the one venue.

Congratulations to the NZ Dealers listed below who were successful in achieving awards:

Sales Achievement Award Aquamatic Engines - Coastline Marine
Sales Achievement Award Large Inboard Engines-Coastline Marine
Sales Achievement Award Medium Inboard Engines - KP Marine
Sales Achievement Award Compact Engines - Ovlov Marine Ltd
Sales Achievement Award Petrol Engines - Ray Roberts Marine
Merit Award - Allvo Marine & Engineering Ltd
Merit Award - KP Marine
Merit Award - Marine Engineering Ltd

SOUND PROOFING

Pyrotek

noise control

Volpower distribute affordable Pyrotek Noise Control products through our dealer network to provide sound proofing solutions for marine and industrial applications. To see samples contact your local Volvo Penta Dealer now.

RACOR FUEL FILTERS

Parker Racor Fuel Filter



Together, we can
protect your
investment in engines
and fuel, maximize
fuel economy,
performance and
maintain a clean
environment.

Parker Racor fuel filters are built with patented Aquabloc elements to obtain maximum efficiency, high dirt holding capacity and are used by many engine manufacturers worldwide for their reliability.

Racor Turbine Series is the most complete, most efficient, most reliable high-capacity engine protection you can install.



0800 VOLPOWER

SONIHULL

Ultrasonic Antifouling System

**Keeps your hull cleaner,
all year round**

Banish the Barnacle
with **Sonihull!**

Easy to install
No hull penetration required

SONIHULL KEEPS YOUR HULL CLEAN

- Uses ultrasonic energy pulses to make surfaces less attractive to barnacles and algae.
- Helps prevent marine growth on hulls, pipe work and sea chests.
- Less marine growth means less hull friction, which means better fuel economy.
- Used in commercial and pleasure craft.

ENVIRONMENTALLY FRIENDLY

Tests demonstrate that electronic antifouling products have no adverse effect to fish. The 'SONIHULL' Ultrasonic signal stays very close to the hull structure and does not stray into open water.



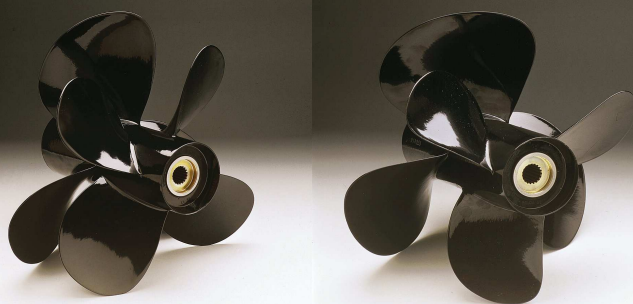
Very easy to install
Kits available for cats and monohulls

0800 VOLPOWER

PROPELLER SPECIAL

**Aluminium Propeller Special
A & B Series sets
Only \$845+GST**

Save \$325 +GST Now!



**Always use only
Genuine Volvo Penta parts**

Available now from your local authorised Volvo Penta dealer

0800 VOLPOWER

**VOLVO
PENTA**

**24
MONTH
WARRANTY**

2 YEAR WARRANTY ON ALL NEW VOLVO PENTA MARINE ENGINES

*Applies to non-commercial use only. Conditional on annual service by authorized Volvo Penta dealers.

VOLVO PENTA MARINE DEALER LIST

NEW ZEALAND:

OPUA: Lowes Marine Services. Paihia Ph 09-402-8375

WHANGAREI: Ray Roberts Marine. Whangarei Ph 09-438-3296

MATAKANA: Matakana Marine & Engineering Ltd. Matakana Ph 09-422-7822

WHANGAPARAOA: Seaquip Marine Services Limited.

Whangaparaoa Ph 09-424-1260

AUCKLAND:

Ovlov Marine Ltd. Westhaven Ph 09-377-4285

Ovlov Marine - Pine Harbour Limited. Beachlands Ph 09-5365249

Allvo Marine & Engineering Ltd. Howick Ph 09-535-9189

Bensemman Boating Centre Ltd. Westpark Marina Ph 09-416 2190

WHITIANGA: Pacific Coast Marine & Diesel. Whitianga Ph 07-866-0551

BAY OF PLENTY/WAIKATO: Coastline Marine Limited.

Tauranga Ph 07-574-9613

TAUPO: Fleet Marine Limited. Taupo Ph 07-378-8514

NEW PLYMOUTH: West Coast Marine. New Plymouth Ph 06-759-0939

GISBORNE: Harbourview Marine Ltd. Gisborne Ph 06-868-8686

NAPIER: Hawkes Bay Marine (2005) Ltd. Napier Ph 06-843-5000

WANGANUI: Marine Services Wanganui Ltd. Wanganui Ph 06-345-6958

PORIRUA: KP Marine. Porirua Ph 04 233 6164

WELLINGTON: Strait Marine Parts & Services Limited.

Wellington Ph 04-568-8062

PICTON: Marine Engineering Ltd. Picton Ph 03-573-6477

PORT NELSON: Aimex Ltd. Port Nelson Ph 03-548-1439

KAIKOURA: Kaikoura Marine Services Ltd. Kaikoura Ph 03-319-5276

CHRISTCHURCH: Southern Viking Ltd. Christchurch Ph 03-348-8976

WANAKA: Torque Marine. Wanaka Ph 03-443-6404

Fiji:

NADI: Yacht Help Fiji. Nadi Ph 679-675-0911-2

WEBSITE INFO: Visit our website for new and used engines and trans, parts, accessories, servicing etc. www.volvopenta.co.nz

Published by Volpower N.Z. Limited, P.O. Box 58744, Botany, Manukau 2163. Phone: 09 274 4305 Fax: 09 274 4306 **0800 VOLPOWER**

Proud to be part of N.Z.'s most comprehensive marine dealer network.

**VOLVO
PENTA**

Dealer Stamp